

Wondering what to do tonight?

Well, tell Bobby Quarterback to take a hike 'cause you're playing Lights Out! With more than 10 built-in challenging levels you might even consider the life of a recluse. And if you think you can get tired of those levels, there are an almost infinite number of random levels that can be generated any time, any where.

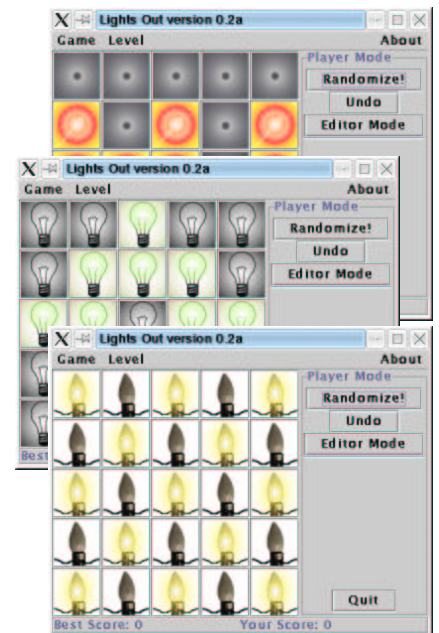


But what if you want to make your own levels?

No problem! Simply slip into Editor Mode, record the level you want and save it for later... it's just that easy. With Lights Out you can create hoards of custom levels and trade them with your friends. The best part is that even though only a small fraction of all possible levels are actually solvable, every level made in Lights Out Editor Mode is guaranteed to be solvable in equal or fewer clicks than it took you to create it.

You want custom Light Themes, too??

Yeah, we got 'em! And they're simple to make too! Just create two 50x50 pixel .GIF images (named light_on.gif and light_off.gif), stick 'em in their own subfolder under the Lights Out themes folder and voila! You've got your own Light Theme to make Lights Out look just the way YOU want it.



Some of the images used to make this advertisement were shamelessly ganked from <http://www.chickenhead.com>, which is OK, because I think we can be pretty sure that they just ganked 'em from somebody else. Chickenhead is a way-cool internet humor site that is not intended for those who cannot afford to be offended. Thanks in advance to the fine folks at Chickenhead.com for not suing my pants off.